

# Mini Excavators XE35U



Rated Power: 24.4 hp  
Operating Weight With Cab: 9,259 lb  
Operating Weight With Canopy: 9,039 lb  
Standard Bucket Capacity: 0.16 yd<sup>3</sup>

XCMG North America Corporation  
5145 Schirlls Street, Las Vegas, NV 89118  
Email: [info@xcmgusa.com](mailto:info@xcmgusa.com)  
Phone: (Las Vegas) 725-605-2777  
(Houston) 346-409-2855  
Web: [www.xcmg-usa.com](http://www.xcmg-usa.com)







# Technical Specifications

## Engine

Make/model	YANMAR/3TNV88F/Tier 4F
Fuel/cooling	Diesel/Liquid, forced circulation
No. of cylinders	3
Piston displacement	0,4 gal
Power output	24.4 hp / 2200 rpm (ISO 14396)
Max torque	62.9-69.5 ft-lb/1320 rpm
Bore x stroke	3.46 in x 3.54 in
Alternator	12 V / 40 A

## Hydraulic system

This original XCMG design allows independent and combined operations of all functions by pilot controlled levers.

### > Pump

Type	Load-sensing axial-piston pump with variable displacement
Total hydraulic capacity	28.5 gal/min
AUX1 & AUX2 maximum flow rat	10.6 gal/min
AUX1/AUX2 standard relief pressure	2,176/3,916 psi

### > Maximum system pressure

Boom	3,916 psi
Arm / bucket / travel	3,916 psi
Swing	2,989 psi

## Fluid capacities

Cooling system (radiator capacity)	2.1 gal
Engine lubrication plus oil filter	1.85 gal
Fuel tank	10.6 gal
Hydraulic tank	11.9 gal
Hydraulic system	7.4 gal
Final drive case (each)	0.18 gal

## Environment

Noise levels comply with environmental regulations (dynamic values).

### > Noise emission

Noise level LpA (ISO 6396)	76 dB(A)
Noise level LwA (ISO 6395)	94 dB(A)

## Drive

Each track is driven by an independent, high-torque, axial piston motor through planetary reduction gears. Two control levers provide smooth travel or counter- rotation upon demand.

### > Speed & traction

Travel speed (low - high)	1.4-2.2 mph
Traction force	7,104 lbf
Gradeability	30°

## Swing mechanism

Each track is driven by an independent, high-torque, axial piston motor through planetary reduction gears. Two control levers provide smooth travel upon demand.

### > Swing system

Boom swing, left	75°
Boom swing, right	50°
Swing speed	9 rpm

## Digging forces (ISO 6015)

Digging force, standard arm (ISO 6015)	4,564 lbf
Digging force, long arm (ISO 6015)	4,047 lbf
Digging force, bucket (ISO 6015)	6,430 lbf

## Weight

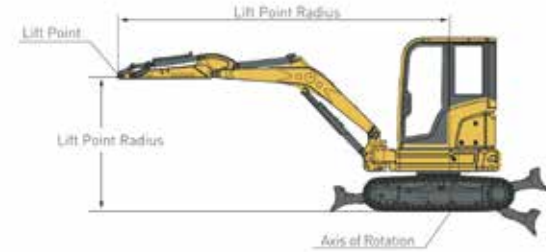
Operating weight with cab and bucket	9,259 lb
Ground pressure with cab and bucket	5.12 psi
Cab transport mass (no attachment)	9,094 lb
Operating weight with canopy and bucket	9,039 lb
Ground pressure with canopy and bucket	5.08 psi
Canopy transport mass (no attachment)	8,874 lb
Weight of steel tracks	988 lb
Weight of rubber tracks	644 lb
Additional weight for long arm	18 lb

# Lifting Capacities

## XE35U

— Cab • standard arm (1 350 mm) • standard counterweight • without bucket

Lifting point height (ft.in)	Over Front Blade Up/Down				Over Side				Max Radius (ft.in)
	Lift At Max Radius (lb)	6'7"	9'10"	13'1"	Lift At Max Radius (lb)	6'7"	9'10"	13'1"	
13'1"	852*/1,878.3		1,801		1,878.3		1,800.9		10'11"
9'10"	812.6*/1,791.5		1,830.1	1,778.7	1,499.1		1,830.1	1,596.4	13'7"
6'7"	814.8*/1,796.3	4,315.1	2,413.6	871*/1,920.2	1,308.2	4,236.2	2,340.4	1,574.8	14'12"
3'3"	830.4*/1,830.7		1 410.7*/3,110.1	975.1*/2,149.7	1,254		2,241	1,537.1	15'4"
0	850.4/1,874.8	3,029.2	1 508.3*/3,325.2	1 013.5*/2,234.4	1,303.1	3,029.2	2,189	1,510.4	14'9"
-3'3"	859.8*/1,895.5	2 181*/4,808.3	1 351.4*/2,979.3	868.3*/1,914.3	1,505.5	3,956.9	2,186.1	1,513	13'2"
-6'7"	1,717.2	2,865.6			1,717.2	2,865.6			9'11"



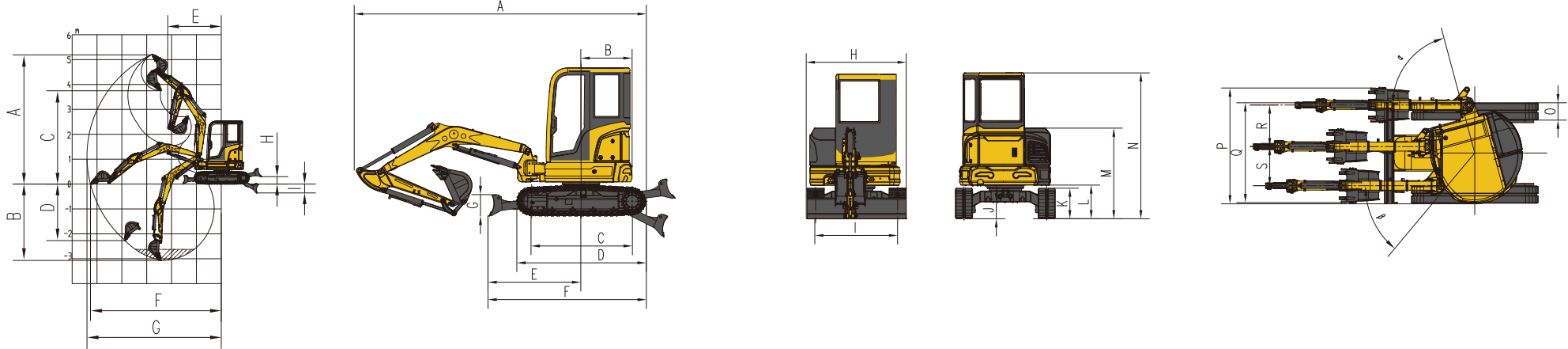
1. The lifting capacity ratings are based on ISO10567.
2. \* The maximum lifting capacity is limited by hydraulic rather than tipping load.
3. With the machine standing on level and firm ground, the lifting capacity does not exceed 87% of the hydraulic capacity or 75% of the tipping load.
4. The operator should be familiar with the machinery operation and maintenance manuals. Local regulations concerning the operation safety of machinery must be followed at all times.
5. The lift diagrams only cover machines that are originally built by the XCMG: without lifting chains and any other lifting equipment.
6. When the excavator is used to lift or handle materials, it must comply with local regulations and be equipped with the necessary hose, burst, valves and an overload warning device complying with EN475-5.

— Cab • long arm (1 600mm) • standard counterweight • without bucket

Lifting point height (ft.in)	Over Front Blade Up/Down				Over Side				Max Radius (ft.in)
	Lift At Max Radius (lb)	6'7"	9'10"	13'1"	Lift At Max Radius (lb)	6'7"	9'10"	13'1"	
13'1"	1659.2		1,515.2		1,659.2		1,515.2		11'11"
9'10"	812.6*/1,629.4		1,583.4	1,606.7	1,389.8		1,583.3	1,594.8	14'5"
6'7"	750.8*/1,655.2	4,315.1	2,163.8	810.1*/1,786	1,224		2,163.8	1,565.7	15'8"
3'3"	773.6*/1,705.5		2,569.5	931.4/2,053.4	1,173.5		2,229.8	1,521	15'11"
0	799.1*/1,761.7	3,023	1 488.5*/3,281.6	999.7*/2,204	1,208.1	3,023	2,160.1	1,486.4	15'5"
-3'3"	830.2*/1,830.3	2 375.7*/5,237.5	1 405.4*/3,098.4	926.5*/2,042.6	1,376.3	3,886.3	2,146.6	1,479.1	13'11"
-6'7"	1,812.6	3,554.7			1,812.6	3,554.7			10'11"



# Technical Specifications



## Working range

A	Maximum digging height-std arm	16'5"
	Maximum digging height-long arm	16'12"
B	Maximum digging depth- std arm	10'
	Maximum digging depth- long arm	10'9"
C	Maximum dumping height- std arm	11'10"
	Maximum dumping height - long arm	12'8"
D	Maximum vertical wall digging depth-std arm	7'5"
	Maximum vertical wall digging depth-long arm	7'10"
E	Minimum swing radius- std arm	7'1"
	Minimum swing radius- long arm	7'3"
F	Maximum digging reach at ground level- std arm	17'1"
	Maximum digging reach at ground level- long arm	17'9"
G	Maximum digging reach- std arm	17'5"
	Maximum digging reach- long arm	18'2"
H	Maximum dozer lifting height	12"
I	Maximum dozer cutting depth	14"

## Dimensions

A	Over length	16'3"
B	Tail slew radius	34"
C	Tumbler length	5'8"
D	Track length	7'3"
E	Dozer blade, maximum reach at ground level	5'3"
F	Undercarriage length	8'10"
G	Dozer blade height	14"
H	Overall width	5'9"
I	Track gauge	4'9"
J	Minimum ground clearance	12"
K	Track height	21"
L	Ground clearance of counterweight	23"
M	Over all height of tank hood	5'3"
N	Overall height	8'4"
O	Track shoe width	12"
P	Working width at maximum right-hand rotation	6'7"
Q	Working width at maximum left-hand rotation	5'8"
R	Maximum boom offset to the right	30"
S	Maximum boom offset to the left	23"
$\alpha$	Maximum boom swing angle to the left	75°
$\beta$	Maximum boom swing angle to the right	50°